

WORLD WIDE SERVICE NETWORK



- | | | | | | |
|---------|-----------|---------|----------|---------|-----------|
| DENMARK | GREECE | SPAIN | CHINA | KOREA | CHILE |
| FINLAND | ITALY | RUMANIA | INDIA | TAIWAN | U.S.A |
| FRANCE | NORWAY | SWEDEN | IRAN | VIETNAM | AUSTARILA |
| GERMANY | PORTUGAL | TURKEY | MALAYSIA | URUGUAY | RUSSIA |
| U.K | SINGAPORE | BRASIL | | | |

Hyundai - Detegasa 15ppm Bilge Separator



IMO Resolution MEPC 107(49)
IMO & MED Type Approved

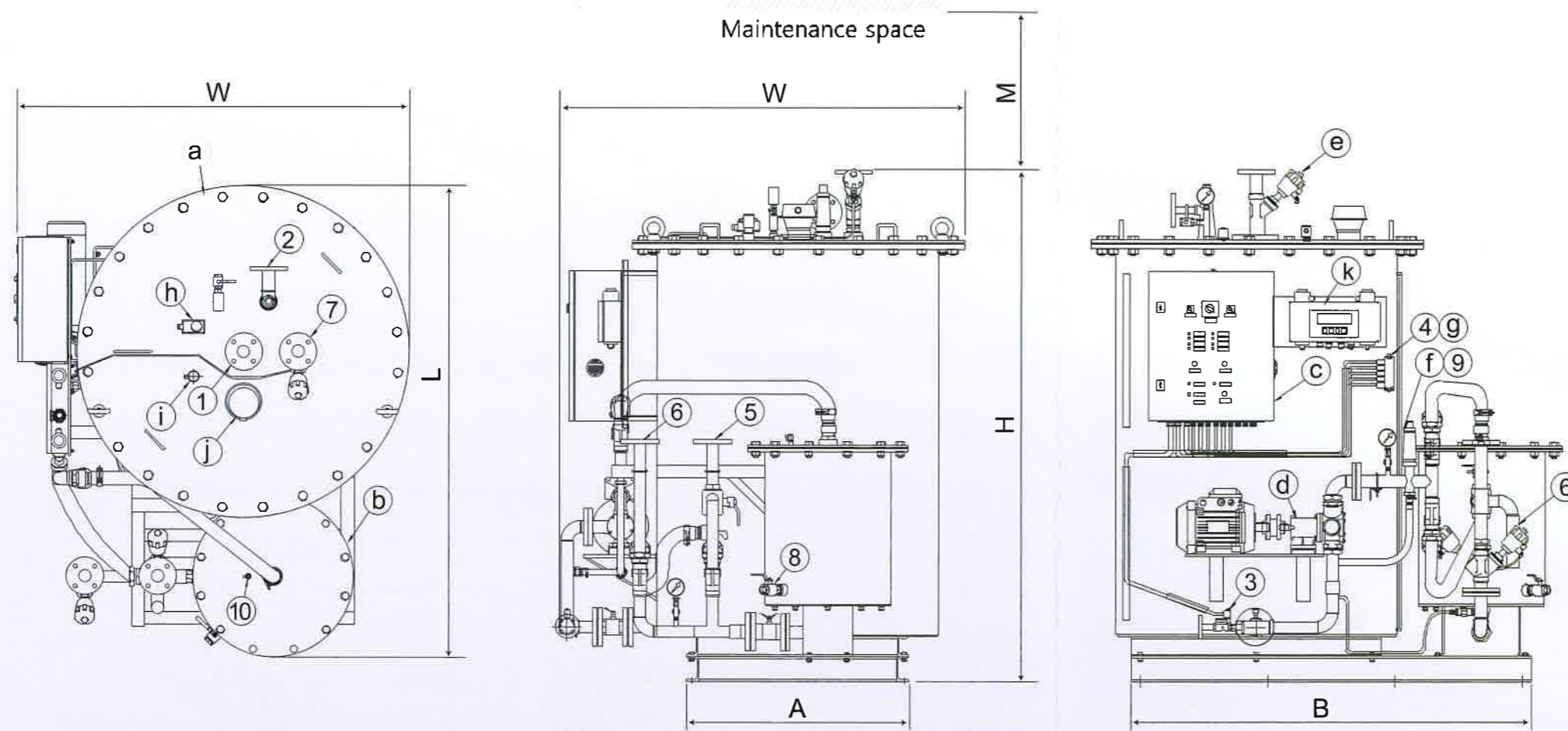


HYUNDAI MARINE MACHINERY CO., LTD.

Head Office & Factory
(Oryudong) 22, 117 Beon-gil, Wondangdae-ro, Seo-gu, Incheon City, Korea
Tel: +82 32 583 0671 Fax: +82 32 583 0674 <http://www.hmmco.co.kr>

Sales & Marketing Team
Tel: +82 32 583 0671 Direct: +82 32 712 0801~6 Fax: +82 32 571 3061
E-mail: hmmco@unitel.co.kr business@hmmco.co.kr

DIMENSION and SPECIFICATION



Main connection

1. BILGE INLET
2. FLUSHING WATER OUTLET
3. FLUSHING WATER INLET
4. COMPRESSED AIR INLET
5. WATER OVERBOARD DISCHARGE
6. RE-CIRCULATING TO BILGE
7. OIL DISCHARGE
8. TANK DRAIN
9. SAFETY VALVE DISCHARGE
10. AIR VENT

COMPONENT

- a. 1st STAGE GRAVITY TANK
- b. 2nd STAGE ADSORPTION TANK
- c. ELECTRIC CONTROL PANEL
- d. BILGE PUMP
- e. PNEUMATIC VALVE
- f. SAFETY VALVE
- g. SOLENOID VALVE for PNEUMATIC VALVE
- h. THERMOSTAT
- i. OIL LEVEL SENSOR
- j. ELECTRIC HEATER
- K. 15PPM BILGE ALARM MONITOR

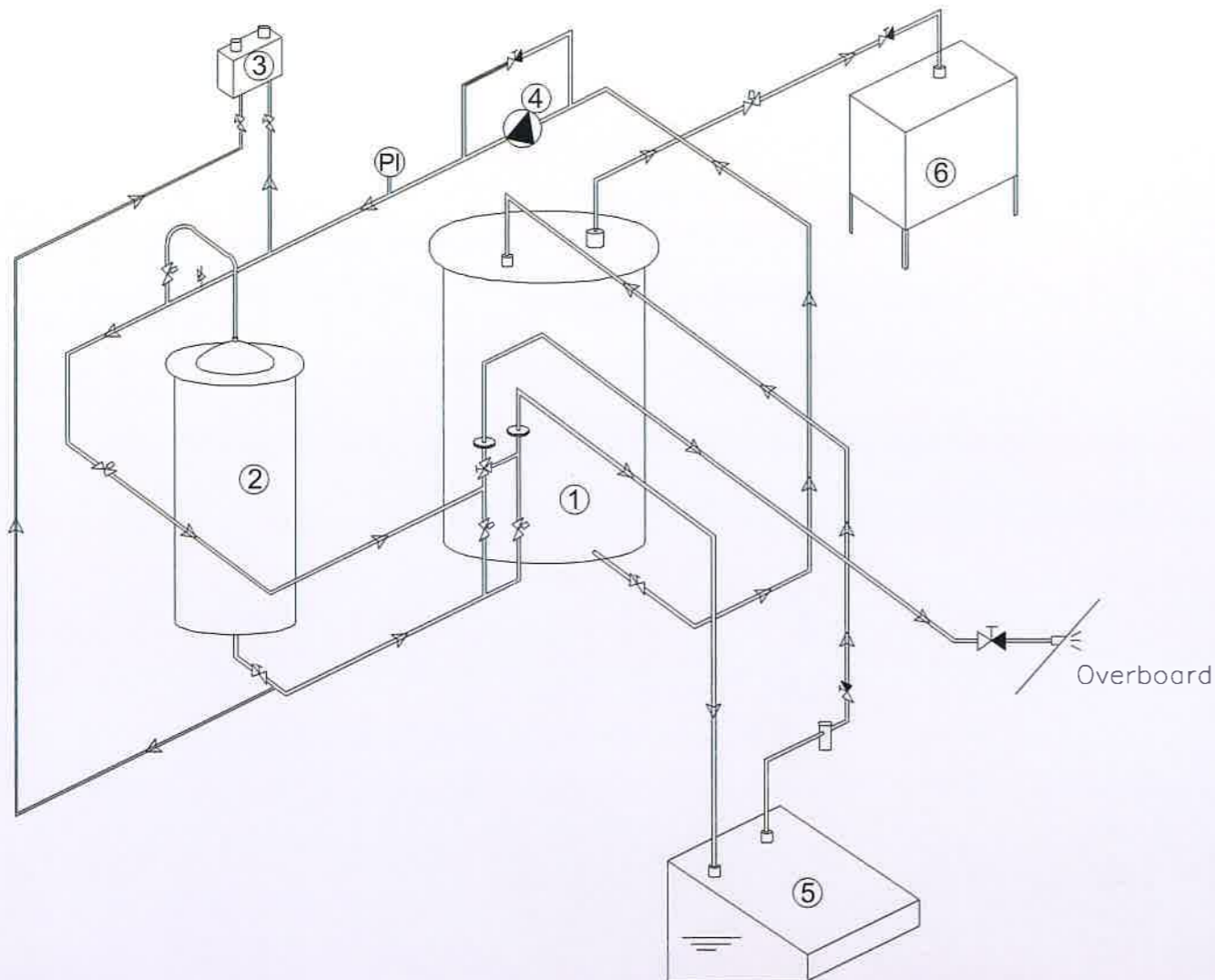
OPTIONAL ITEM

W.D.M.S (Water Discharge Monitoring System)

WDMS to monitor and record, water discharge from bilge separator in terms of time, position, flow rate and oil content.

Type	Capacity (m ³ /h)	W (mm)	L (mm)	H (mm)	A (mm)	B (mm)	M (mm)	BILGE INLET	WATER OUTLET	OIL OUTLET	WEIGHT (kg at dry)
Hyundai-Detegasa 0.5	0.5	880	1,036	1,246	350	900	500	25A	25A	25A	360
Hyundai-Detegasa 1.0	1.0	940	1,222	1,350	450	1,080	500	25A	25A	25A	440
Hyundai-Detegasa 2.5	2.5	1,250	1,515	1,740	690	1,275	600	32A	32A	32A	730
Hyundai-Detegasa 5.0	5.0	1,610	1,888	2,048	890	1,600	600	40A	40A	40A	1,130
Hyundai-Detegasa 10.0	10.0	1,990	2,565	2,430	1,190	2,300	700	50A	50A	50A	1,720

WORKING DIAGRAM



MAIN COMPONENT

1. 1st stage gravity tank
2. 2nd stage adsorption tank
3. 15ppm bilge alarm monitor
4. Bilge pump
5. Bilge tank
6. Sludge tank

Hyundai-Detegasa bilge separator separates oil and water, using the difference in the specific gravities. It consists of two stages. Bilge water coming into the 1st stage gravity tank is separated into oil and water by a gravity static separator located at the upper side in the gravity tank. The separated water passes the coalescent filter located at the lower side in the gravity tank, then lead to the 2nd stage adsorption tank to treat emulsions, if any, by adsorption filters.



Main Features & Advantages

- Hyundai-Detegasa 15ppm bilge separator is designed to ensure a smooth operation on board
- Reliable performance.
- Easy installation and low maintenance required.
- Customized solutions to comply with different hazardous zones and military requirements.
- All components installed in our separator are from first class quality.
- 5ppm operation
- 2-measuring cells of 15ppm Bilge alarm monitor allows effective operation by reading simultaenously both downstream of 1st and 2nd stage.
- The 1 stage tank automatic cleaning operation is available by using sea water, thus prolonging filter lifetime.