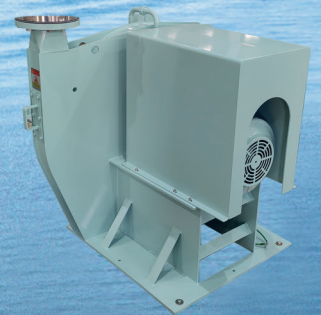
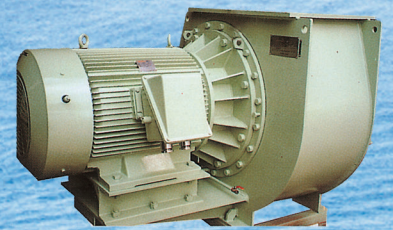


Hyundai Marine Fans & Blowers



Auxiliary Blower with Motor for Main Engine

Facilitate Main Engine operation and supply air for combustion during low operation. Designed according to the specifications given by the two Main Engine manufacturer, "MAN" and "WINGD", the product is manufactured after the approval of specific Main Engine maker.

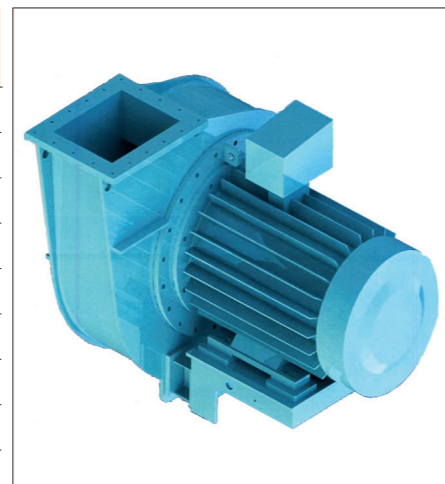
MAN Built in TYPE (without Casing)

No	Engine Type	Engine Type	Model	Air Volume (m³/sec)		Pressure (mmAq)		Power	ETC
				Q1	Q2	P1	P2		
1	6S60ME-C	6S60ME-C8,5	HAA-275/152N	2,18	3,96	459	255	45kW-2P	AIR DENSITY 1,225~2,1
2	5G70ME-C	5G70ME-C9,5	HAA-490/334N	3,35	6,05	459	255	55kW-2P	
3	5G70ME-C	5G70ME-C9,5	HAA-425/233N	4,04	7,28	459	255	75kW-2P	
4	6G80ME-C	6G80ME-C10,5	HAA-334/115N	5,58	10,00	459	255	90kW-2P	
5	11G95ME-C	11G95ME-C9,5	HAA-490/274N	6,50	11,75	459	255	125kW-2P	
6	11G95ME-C	11G95ME-C10,5	HAA-412/265N	8,30	14,20	459	255	155kW-2P	
7	8G95ME-C	8G95ME-C10,5-LGIM	HAA-320/347N	9,64	17,30	459	255	200kW-2P	
8	8G95ME-C	8G95ME-C10,5	HAA-350/347N	11,50	20,70	459	255	250kW-2P	



WINGD TYPE

NO	Engine Type	Model	Air Volume (m³/sec)	Pressure (mmAq)	Power
1	5RTF50DF	HAS-334/80N	1,8	800	30kW-2P
2	6X52DF	HAS-334/120N	2,1	800	37kW-2P
3	6X62DF	HAS-278/165N	3,6	800	55kW-2P
4	6X62	HAS-334/120N	4,0	800	65kW-2P
5	6X72DF	HAS-400/175N	5,0	800	90kW-2P
6	8RT-FLEX68-D	HAS-400/175N	6,3	800	110kW-2P
7	8RT-FLEX82T	HAS-400/180N	7,8	800	125kW-2P
8	7X92-B	HAS-412/240N	9,8	800	155kW-2P
9	W9X92	HAS-412/210N	12,5	800	187kW-2P
10	W10X92	HAS-434/245N	15,8	800	250kW-2P

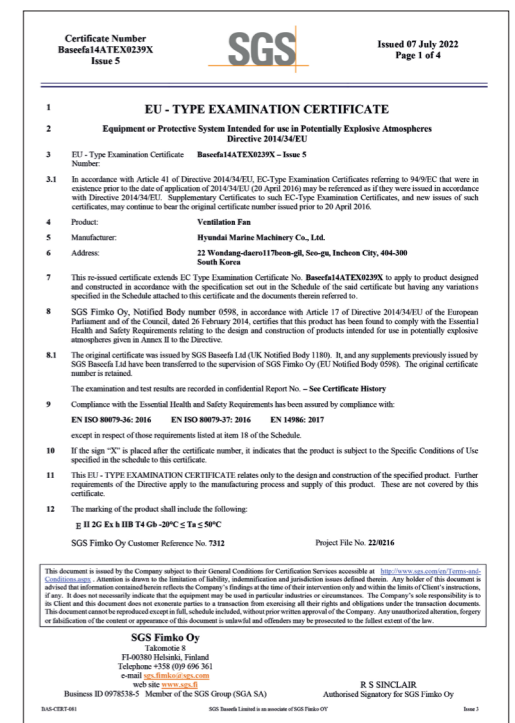
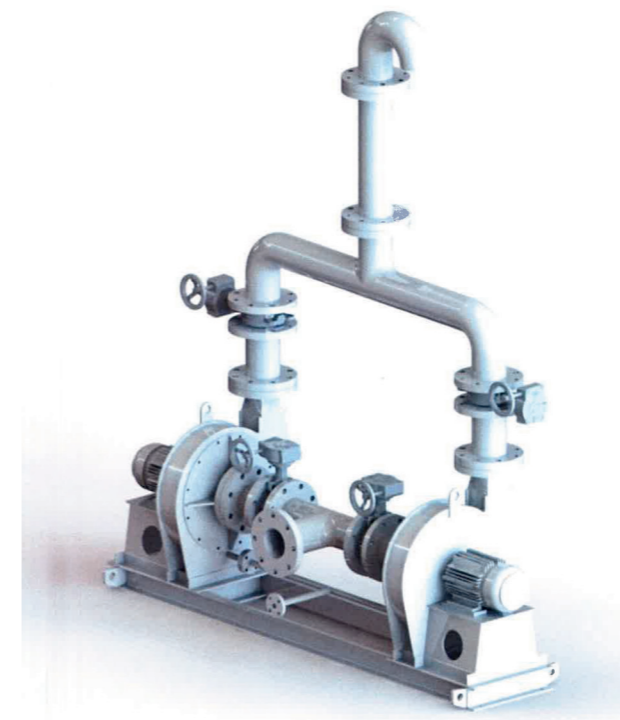


Ventilation Fan with Ex-Proof type & Extraction Fan for Gas Vessels

Install on GAS Engine and main purpose is monitoring for any gas leakage on supplied pipe on Engine.

HMMCO have ATEX Certificate (Europe Ex-proof type)

EXPLOSION PROOF TYPE (ATEX)	MODEL	Air Volume (m³/min)	Pressure (mmAq) (Suction pressure)	Power (kW)
II 2G Ex h IIB T4 Gb	HTF	Min 0,5 Max 5	50 ~ 150	0,75
II 2G Ex db h IIB T4 Gb II 2G Ex db eb h IIB T4 Gb	HATF	Min 0 Max 5	371 ~ 581 (-346 ~ -530)	3,7 5,5
			744 ~ 1774 (-699 ~ -1550)	18,5 22 30 37
			1800 ~ 3300 (-1600 ~ -2500)	18,5 22 30 37
	HMTF	Min 0 Max 5	1800 ~ 3300 (-1600 ~ -2500)	18,5 22 30 37



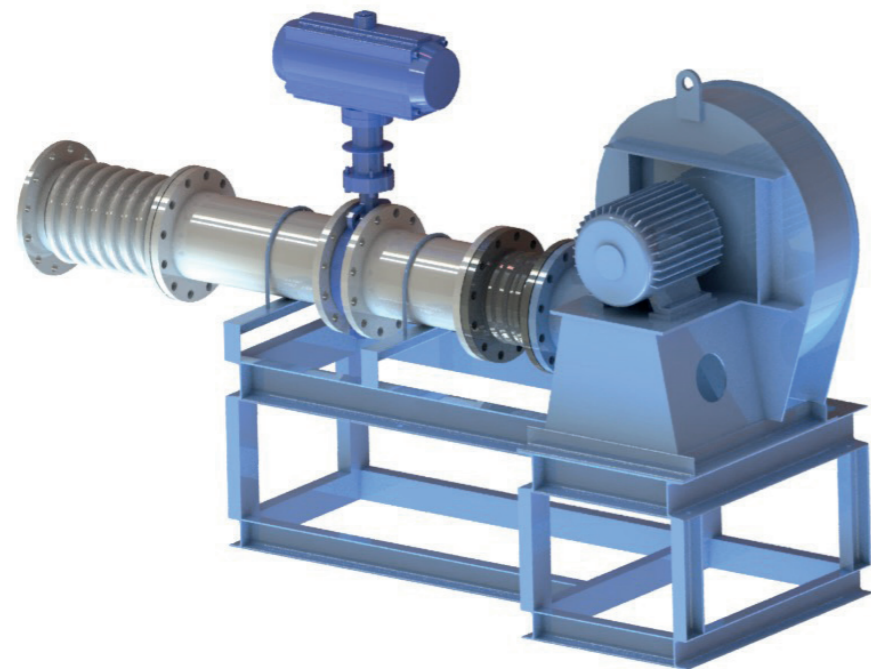
Ventilation Fan for 4-Stroke Engine

Gas detection on Dual Fuel Diesel Generator (DFDG) Engine

We have been supplying this fan to HHI Engine (HIMSEN Engine)

VENTILATION FAN SYSTEM

규격	Air Volume (m ³ /min)	Pressure (mmAq)	Power
HTF - 100	2.4	306	1.5kW-2P
HTF - 150	10	306	3.7kW-2P
HTF - 150	25	306	3.7kW-2P
HTF - 200	43.8	306	5.5kW-2P



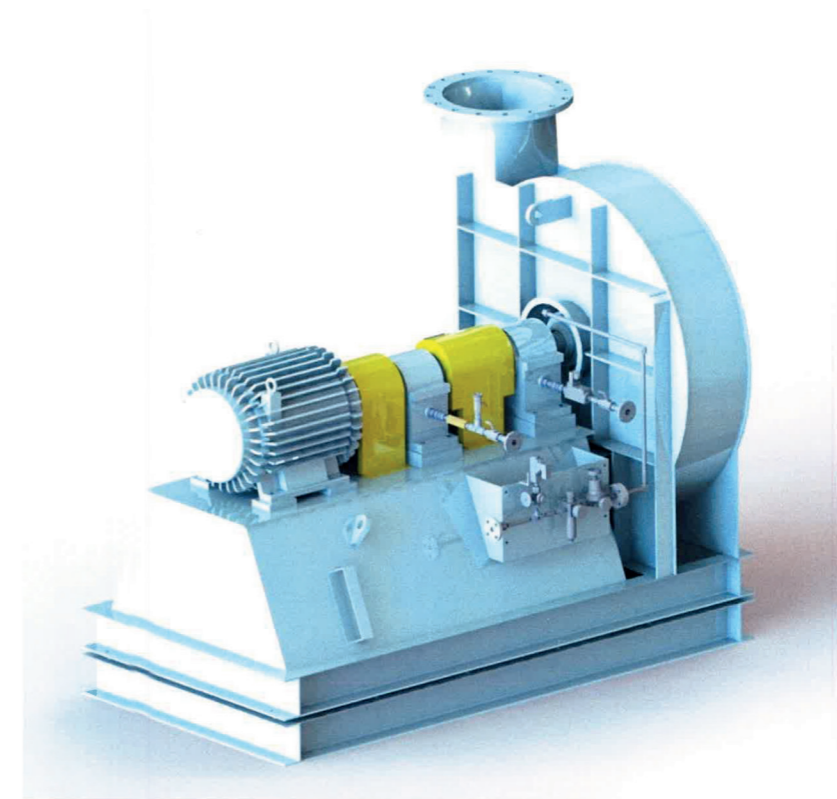
SCR (Selective Catalytic Reduction) Blower

Some of the exhaust gas flowing from engine flows into the SCR system.

SCR BLOWER

NO.	Air volume (m ³ /min)	Pressure (mmAq)	Power
1	1500N	1000	18.5kW-2P
2	2500N	1000	22kW-2P
3	3000N	1000	30kW-2P
4	4000N	1000	37kW-2P
5	5000N	1000	45kW-2P
6	6000N	1000	55kW-2P
7	8500N	1000	75kW-2P

* Normal operating temperature 200~300°C



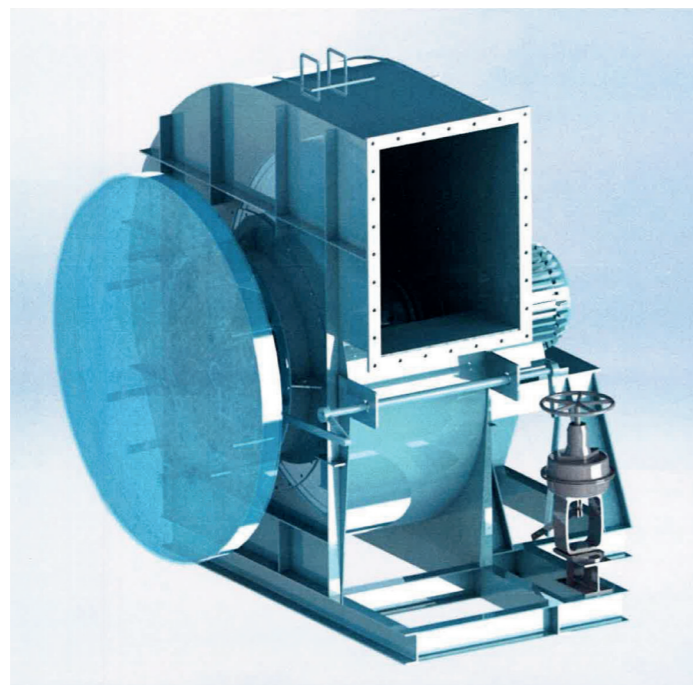
F.D.Fan (Forced Draft Fan) for Aux Boiler

Supply air and pressure to the Aux.Boiler.

Customer : Alfa laval, Mitsubishi

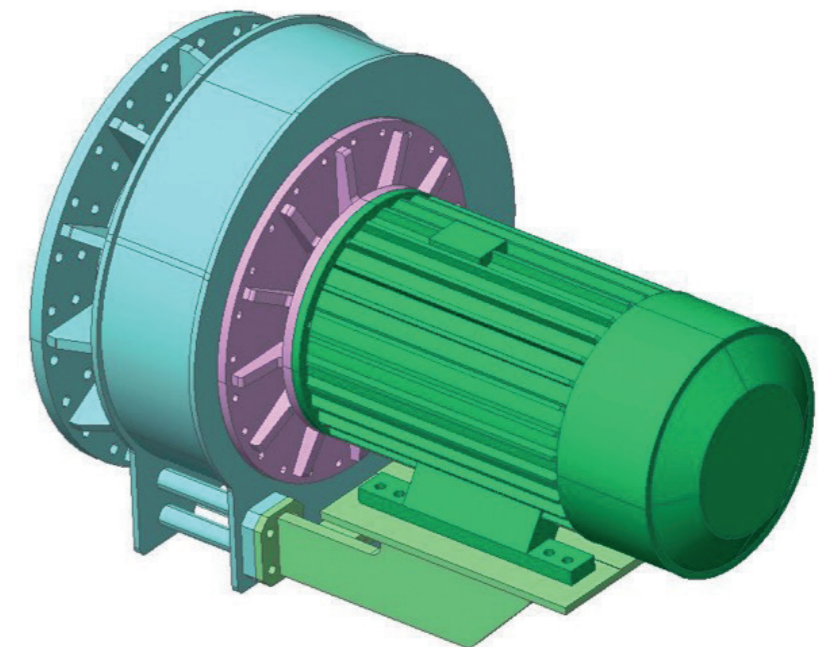
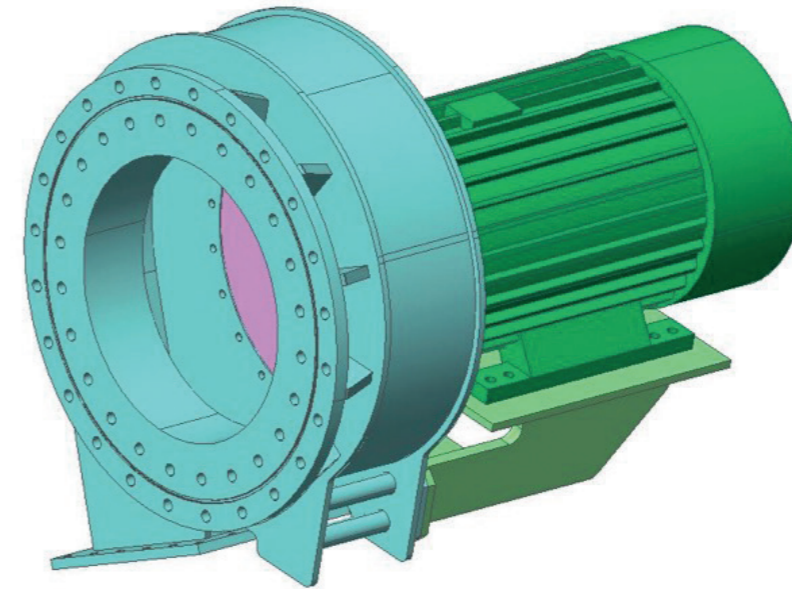
F.D. FAN

BOILER Capa.	Model	Air Volume (m ³ /min)	Pressure (mmAq)	Power
18 TON	HTF-750H-AF	260	581	45kW-4P
20 TON	HTF-650H-EB	370	460	55kW-4P
25 TON	HTF-750H-EB	510	560	75kW-4P
30 TON	HTF-750H-EB	630	640	127KW-4P
35 TON	HTF-750H-EC	710	560	110KW-4P
40 TON	HTF-750H-EC	795	591	125kW-4P
45 TON	HTF-800H-EC	895	620	150kW-4P
50 TON	HTF-800H-EC	990	652	165KW-4P
55 TON	HTF-800H-EC	1090	654	187KW-4P



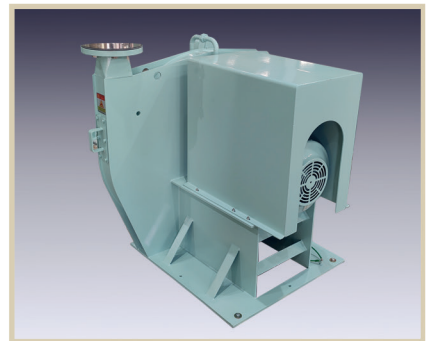
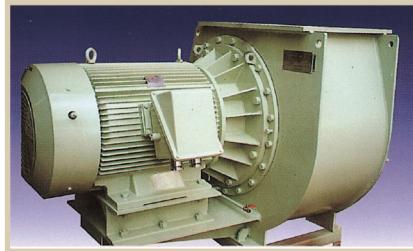
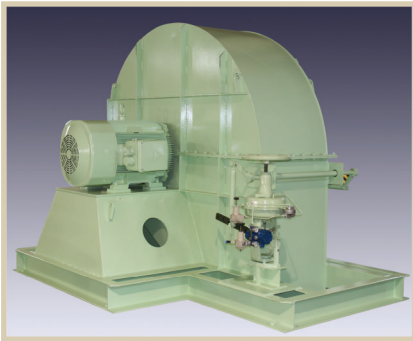
EGR (Exhaust Gas Recirculation) Blower - Low pressure. (ME-GA Engine)

A component of the EGR system that recirculates exhaust gas to the engine inlet to reduce NOx emissions by lowering the combustion temperature in the EGR system.





HMMCO



Hyundai Marine Machinery Co. LTD.

Head Office & Factory

22, Wongdang-Daero 117Beon-gil, Seo-gu, Incheon, Korea (404-300)

Sales & Marketing Team

Tel +82-32-583-0671 Fax +82-32-571-3061 E-mail : business@hmmco.co.kr